

Steam Filters Utilities

Filter Cartridges



Steam filtration is often neglected or regarded as an add on to liquid or gas filtration applications.

It is however, a specific application and should be treated with the same level of importance as air, gas and liquid systems if longer filter lifetimes and overall system cost-effectiveness are to be achieved.

The quality of steam used within food and dairy industries has been raised higher on the agenda in an ever increasing number of companies. Minimum acceptable standards are now being quoted on a more regular basis with particular reference to 'culinary grade' steam. Steam serves several purposes in the food and beverage industry. It is critical that this steam is of a high quality to ensure effective and continuous operation of the process.

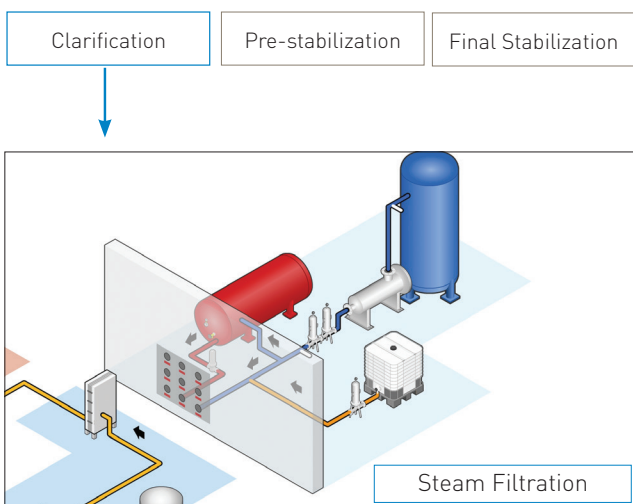
Features

- Robust all welded 316L stainless steel construction
- 'JUMBO' filter configuration ensures maximum utilization of pipework capacity
- Available in culinary grade 1 micron absolute

Benefits

- Long service life under extreme conditions
- Reduced operational cost
- Assures performance to 3A standard

Filtration Stage



Which filter for which applicaiton?

Process Steam		Culinary Steam (3A Standard 609-03)	
<ul style="list-style-type: none"> Direct from boiler No direct contact with product being manufactured 		<ul style="list-style-type: none"> 95% retention of >2 micron particles in the liquid phase Manufactured from 300 series stainless steel Any additives to the boiler feed should conform to CFR Title 21, Chapter1, Part 173.310 	
<p>↓</p>		<p>↓</p>	
Applications		Applications	
<ul style="list-style-type: none"> General heating Steam jackets Bio waste kill systems 		<ul style="list-style-type: none"> Used in direct contact with food Direct contact with food processing equipment and HVAC systems 	
<p>↓</p>		<p>↓</p>	
<p>Sintered 25µm Used for relatively low flow rates</p>	<p>Pleated 5µm High flow rates and dirt holding capacity</p>	<p>Sintered 1µm used for relatively low flow rates</p>	<p>Pleated 1µm Used to maximize steam capacity of pipe</p>

Specifications - Pleated cartridges

Materials of Construction

■ Filtration Media:	316L Stainless Steel
■ Inner Support Core:	316L Stainless Steel
■ Outer Protection Cage:	316L Stainless Steel
■ End Caps:	316L Stainless Steel
■ Standard o-rings/gaskets:	EPDM (Standard) Silicone and Viton <i>(options available)</i>

Recommended Operating Conditions

The maximum differential pressure in direction of flow (outside to in) is 10 barg (145.03 psig).

The maximum differential pressure in direction of flow (in to outside) is 2 barg (29.00 psig).

The maximum recommended continuous operating temperature range is -75 °C (-103 °F) to +200 °C (392 °F).

Note: Temperature dependant on o-ring compound

Effective Filtration Area (EFA)

10" (250 mm) 0.15 m² (1.61 ft²)

Specifications - Sintered cartridges

Materials of Construction

■ Filtration Media:	Sintered Stainless Steel (316L)
■ End Caps:	316L Stainless Steel
■ Standard o-rings/gaskets:	EPDM (Standard) Silicone and Viton® <i>(options available)</i>

Recommended Operating Conditions

The maximum differential pressure in direction of flow (outside to in) is 10 barg (145.03 psig).

The maximum differential pressure in direction of flow (in to outside) is 5 barg (72.51 psig).

The maximum recommended continuous operating temperature range is -75 °C (-103 °F) to +200 °C (392 °F).

Note: Temperature dependant on o-ring compound

Ordering information

ZCSS - [] - []

Code	Length	Code	Nominal Micron Rating Steam	Code	End Cap (10")
B	2.5" (65 mm)	001	1.0 µm (Culinary)	B	dh DOE
A	5" (125 mm)	025	25.0 µm	C	226 Bayonet
K	5" (125 mm)				
1	10" (250 mm)				
2	20" (500 mm)				
3	30" (750 mm)				

All cartridges supplied as single items

Code	End Cap (Demi)
T	TRUSEAL
Z	Demi A & B Std

ZCHS - [] - []

Code	Length	Code	Nominal Micron Rating Steam	Code	End Cap (10")
B	2.5" (65 mm)	001	1.0 µm (Culinary)	B	dh DOE
A	5" (125 mm)	005	5.0 µm	C	226 Bayonet
K	5" (125 mm)			3	3" JUMBO
1	10" (250 mm)			4	4" JUMBO
2	20" (500 mm)				
3	30" (750 mm)				
J	JUMBO				

All cartridges supplied as single items

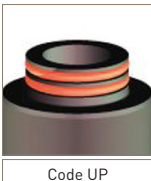
Code	End Cap (Demi)
T	TRUSEAL
Z	Demi A & B Std

Sintered retrofit ordering information

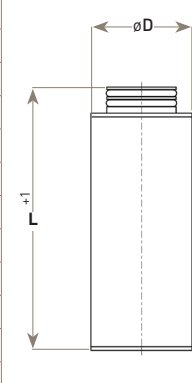
Z [] - [] - []

Code	Micron	Code	Length (Nominal)	Code	Diameter (Nominal)	Code	End Cap
P	1 micron	02	2" (65 mm)	05	1"	UP	2 x o-ring
S	25 micron	03	3" (125 mm)	10	1"		
		04	4" (125 mm)	20	2"		
		05	5" (250 mm)	25	2.5"		
		07	7" (500 mm)	30	3"		
		10	10" (750 mm)	50	5"		
		15	15" (750 mm)				
		20	20" (750 mm)				
		30	30" (750 mm)				

All cartridges supplied as single items



Code UP

Description	L	D	Diagram
ZP/ZS 0310 UP	86	35	
ZP/ZS 0410 UP	114	35	
ZP/ZS 0420 UP	117	40	
ZP/ZS 0520 UP	141	40	
ZP/ZS 0525 UP	141	54	
ZP/ZS 0725 UP	193	54	
ZP/ZS 0730 UP	196	76	
ZP/ZS 1030 UP	269	76	
ZP/ZS 1530 UP	396	76	
ZP/ZS 2030 UP	523	76	
ZP/ZS 3030 UP	775	76	
ZP/ZS 3050 UP	775	76	